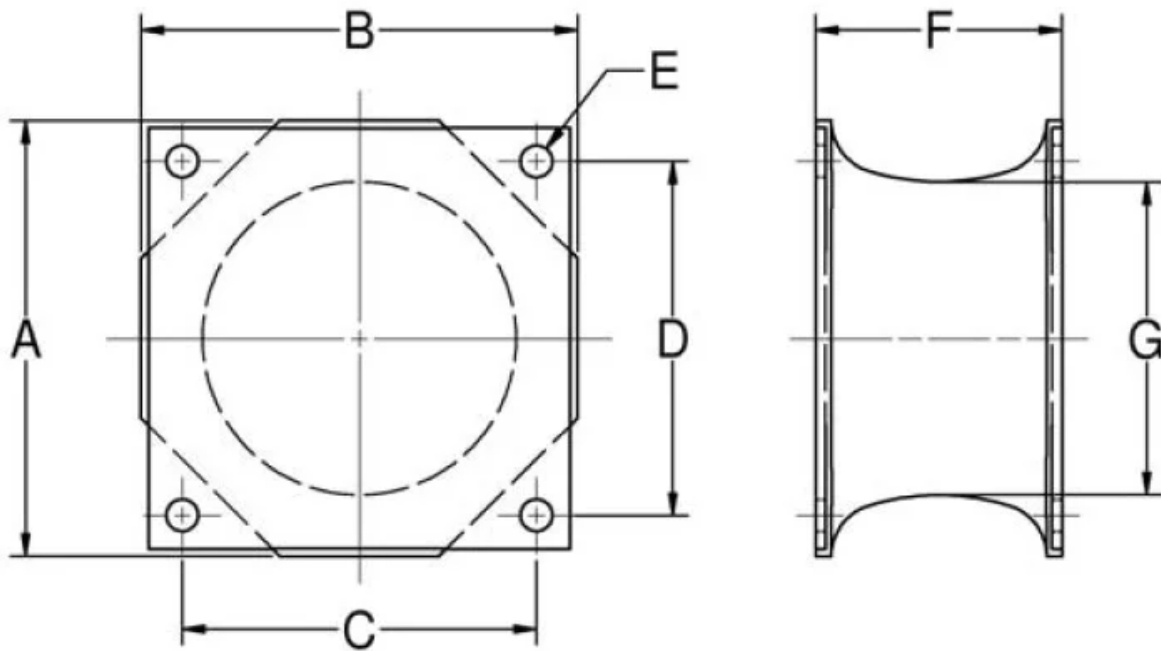


SMA090-0900-1

in Large Shear Mounts



- Economical.
- Compact and lightweight.
- Easy to install.
- Maintenance-free.
- Three size groups: small, medium and large.

Specifications

COMPRESSION STATIC LOAD (LBS)	7600
COMPRESSION STATIC LOAD (N)	33806
COMPRESSION - SPRING RATE KC (LBS/IN)	10500
COMPRESSION - SPRING RATE KC (N/MM)	1839
SHEAR STATIC LOAD (LBS)	900
SHEAR STATIC LOAD (N)	4003
SHEAR - SPRING RATE KS (LBS/IN)	1675
SHEAR - SPRING RATE KS (N/MM)	293
A (IN)	9
B (IN)	9
C (IN)	7.5
D (IN)	7.5
THREAD SIZE	
E (IN)	0.51
F (IN)	4
F (MM)	101.6
ELASTOMER	Natural Rubber
G (IN)	6.5
G (MM)	165.1
PRODUCT TYPE	Mounts
MANUFACTURER	Lord Corporation
TYPE	5L

FLANGE THICKNESS (IN)	0.19
FLANGE THICKNESS (MM)	4.8