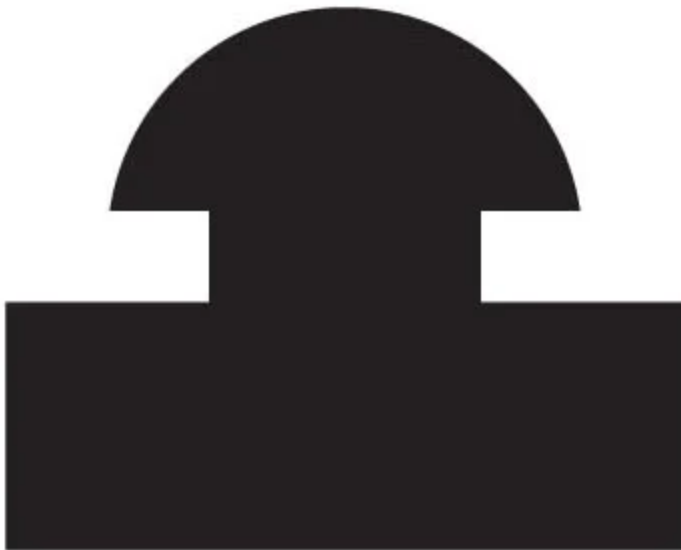
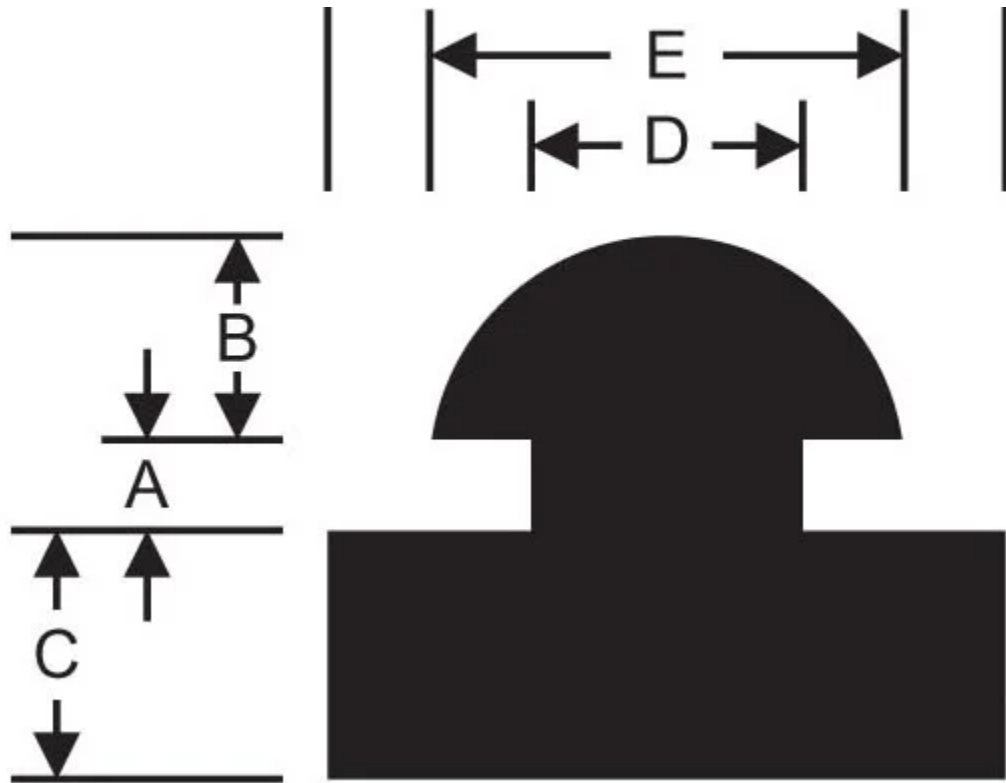


# PB-0562-01

in Grommet Bumper B





RPM's rubber recessed bumpers are used to protect doors or truck bodies from damage. They are also used as feet for large vibrating equipment.

RPM's rubber bumpers are a low cost way to provide a rubber break for many different applications. They provide a great way to protect and isolate any two surfaces. If you need a special size, contact us and see how we can help!

## Specifications

GROOVE WIDTH (A) (IN)	1/16
HEAD HEIGHT (B) (IN)	3/32
BASE HEIGHT (C) (IN)	5/32
GROOVE DIAMETER (D) (IN)	11/32
HEAD DIAMETER (E) (IN)	13/32
BASE DIAMETER (F) (IN)	9/16
PRODUCT TYPE	Bumpers
MANUFACTURER	RPM Mechanical, Inc.

