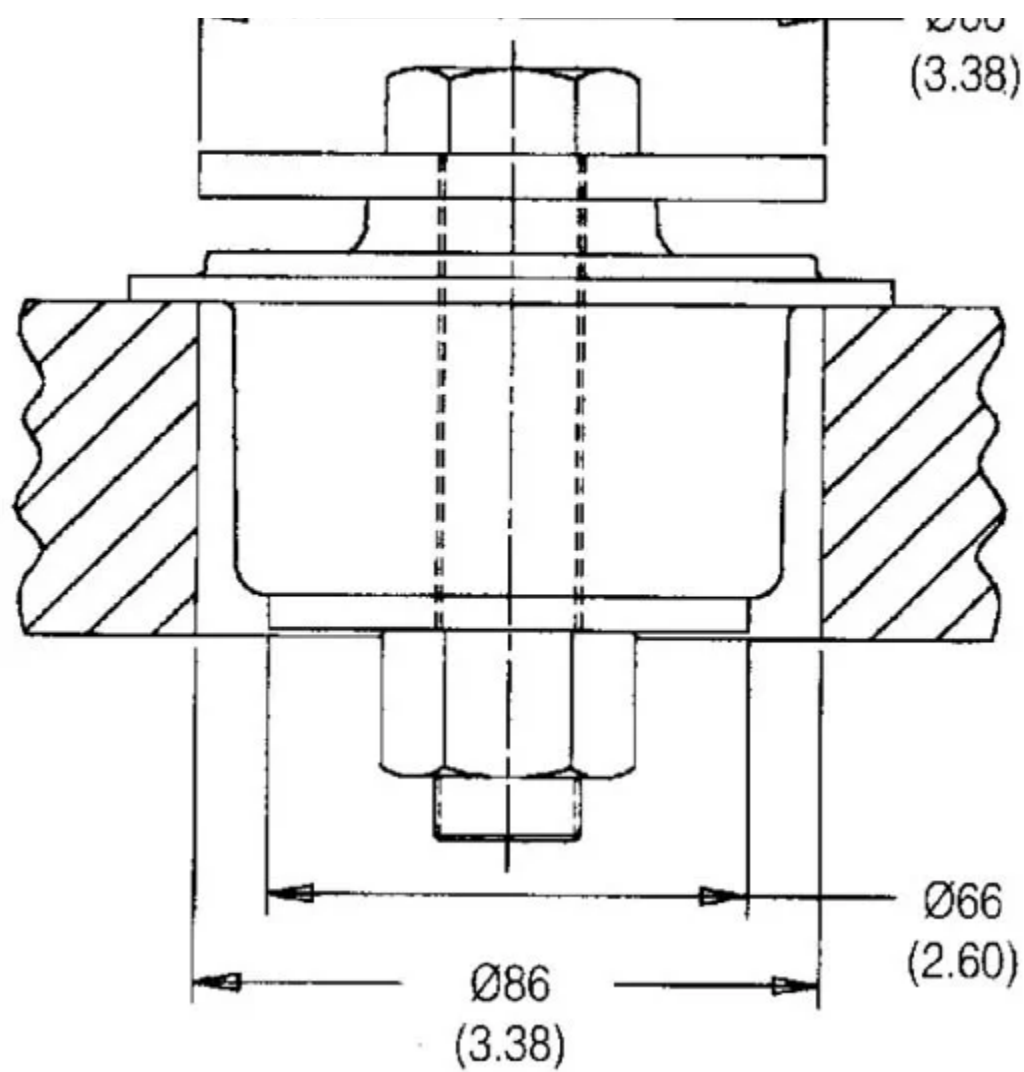
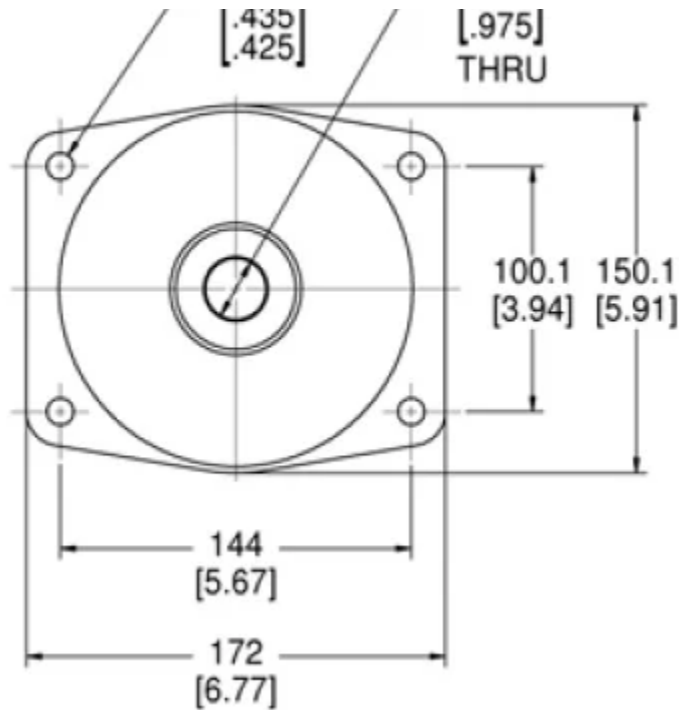


J-21159-8

in Conical Mounts







Conical mounts from Lord Corporation provide effective vibration isolation and noise attenuation with a simple, robust mount design. Consistent performance, high load bearing capabilities and a choice of radial stiffness characteristics are key features of these mounts. For more demanding vibration and noise reduction requirements, Lord integrates conical mounts with surface-effect technology to form an advanced control solution known as Hystec™ Systems.

Conical mounts are appropriate for both on-road and off-road vehicles. Applications include cab mounts and engine and transmission mounts for trucks and buses, and construction and agricultural vehicles.

Data at Axial Load and Dynamic Axial Motion of ± 0.5 mm.

The Mounts :

- Provide strong, dependable performance.
- Have a typical static deflection of 5mm.
- Offer a choice of radial stiffnesses.
- Can be snubbed.
- Can be safetied with the use of snubbing washers.
- Withstand R.O.P.S. loads with the addition of support rings.
- Are easily installed.
- Exhibit long, highly reliable service life.

Conical mounts provide effective vibration isolation and noise attenuation with a simple, robust mount design.

solution known as Hystec™ Systems.

Conical mounts are appropriate for both on-road and off-road vehicles. Applications include cab mounts and engine and transmission mounts for trucks and buses, and construction and agricultural vehicles.

Specifications

| | |
|-------------------------------------|------------------|
| RATED AXIAL STATIC LOAD (LBS) | 1670 |
| RATED AXIAL STATIC LOAD (N) | 7430 |
| RATED AXIAL STATIC DEFLECTION (IN) | 0.3 |
| RATED AXIAL STATIC DEFLECTION (MM) | 7.6 |
| AXIAL STATIC STIFFNESS (LBS/IN) | 4822 |
| AXIAL STATIC STIFFNESS (N/MM) | 845 |
| AXIAL DYN STIFFNESS (LBS/IN) | 7685 |
| AXIAL DYN STIFFNESS (N/MM) | 845 |
| RADIAL R1 STATIC STIFFNESS (LBS/IN) | 18110 |
| RADIAL R1 STATIC STIFFNESS (N/MM) | 3170 |
| ITEM NAME | |
| MAX AXIAL LOAD RATING (LBS) | 1670 |
| MAX AXIAL LOAD RATING (N) | 7430 |
| MAX AXIAL DEFLECTION (IN) | 0.3 |
| MAX AXIAL DEFLECTION (MM) | 7.6 |
| RECOMMENDED BOLT SIZE (IN) | 7/8 |
| PRODUCT TYPE | Mounts |
| MANUFACTURER | LORD Corporation |
| RATED R2 STATIC STIFFNESS (LBS/IN) | 18110 |
| | |

